



Lasting Luxury for Less

NOTHING COMPARES TO A

Down East Spa





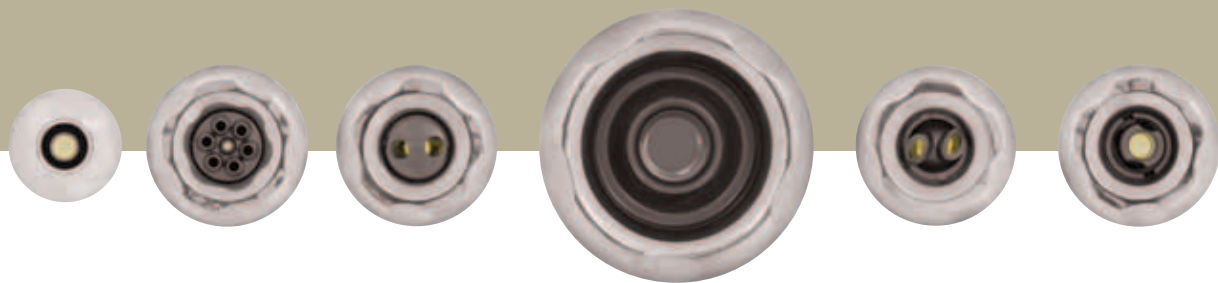
At Down East Spas, we've spent more than 30 years creating the perfect spa experience. Using the best designs and technologies in the industry, we offer the most relaxing and therapeutic spas you'll find anywhere. And thanks to our innovative filtration and heating systems, your Down East Spa is among the easiest to care for and most economical to operate.

Are you ready to put the stresses of the day behind you? Let us pamper you. Because for the ultimate relaxation in the comfort of your home, nothing compares to a Down East Spa.

WITH A WIDE RANGE OF SEATING ARRANGEMENTS,

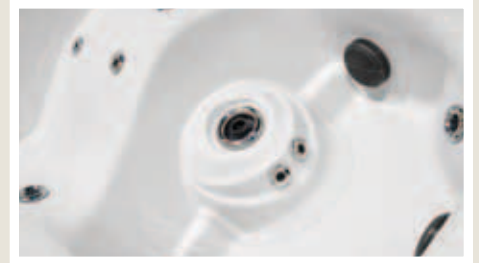
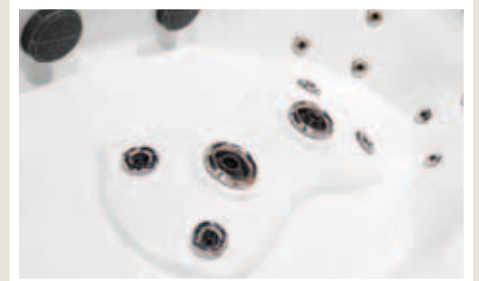
OUR SPAS FEATURE ERGONOMICALLY DESIGNED SEATS TO

Fit the natural contours of your body



A variety of powerful, adjustable jets provide deep massaging water movement where you want, at the strength you find most comfortable. Plus, you can individually move like-sized jets to a different seat position to customize your therapy experience on most models.





FOOT THERAPY SYSTEM

You'll love the soothing relief of the Foot Therapy System on your new Down East Spa. To get all the benefits of a therapeutic foot massage, simply slip into your Down East Spa, and let our advanced jet systems take you to paradise.

To massage away tension and improve circulation, our spas feature powerful jets that are strategically located to relax you from head to toe. Our spa configurations feature reverse molded seats that offer greater comfort while providing a deep massage for this much neglected area of our body.

THE ECO PUR *Water Filtration System*

With a Down East Spa, you can rest assured that the quality of the water exceeds industry standards. In fact, we've developed a complete spa filtration system for clean, clear water that uses the same techniques as Mother Nature.

MULTI-STAGE WATER POLISHING SYSTEM



Stage 1: Macro Pre Filter

The macro filtration system uses a macro or coarse filter similar to natural sand and gravel filtration to remove all large contaminants and debris that enter the filter area. With our free flow filter core, you receive the most even flow of water through the entire cartridge which maximizes filtration utilizing greater media surface. This is the latest media in spa filtration combining 100% polyester synthetic fibers with microban antimicrobial technology which filters out contaminants and inhibits the growth of bacteria that causes odors and stains.

Stage 2: Eco Pur Polishing Filters

This additional stage of filtration helps to polish the water to a sparkle.

Stage 3: Ozonation

Our system uses a high output Corona Discharge Ozone generator to oxidize the water.



OUR SPAS LOOK AND SOUND

Better Than Ever

Our exciting, optional, iPod/MP3 docking station with FM tuner and subwoofer features a waterproof enclosure. (Available on the East Hampton, Portsmouth, Windsor, Exeter and Cape Cod models.)



Our unique flush-mount speaker design allows you to use a normal spa cover and still enjoy rich stereo sound.



DEX THERAPY SEAT



OPTIONAL LED LIGHTING



CONTROL PANEL



WATERFALL

A Down East Spa takes your luxury spa experience to a whole new level – at remarkable values. Most models feature dual high-performance therapy pumps, a colorful waterfall, and the patented Eco Pur multi-stage filtration system for clean, clear water.

You can add an optional premium sound system that's iPod ready or for the ultimate in backyard luxury, choose the Spa Theater System option on the Windsor and relax while watching your favorite program on the pop-up flat screen HDTV.

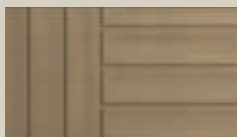
SKIRT AND COLOR *Options*

Match the color of your spa with the skirting of your choice, for a distinctive combination that's truly your own.

Choose from the standard DuraMaster Premium™ polymer skirting, or the MasterSelect™ skirt that has the look of real wood, but is virtually maintenance free. For the ultimate luxury choose the convincing DreamStone™ synthetic rock skirt.

SKIRT OPTIONS

STANDARD DuraMaster Premium™



Portabello

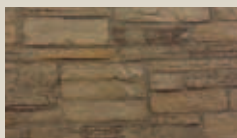


Mahogany



Espresso

OPTIONAL DreamStone™

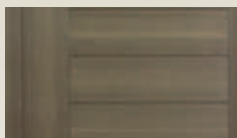


Desert



Granite

OPTIONAL MasterSelect™

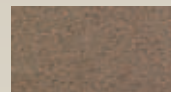


Driftwood

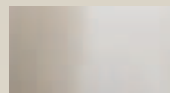
SHELL OPTIONS



Kalahari



Cinnabar



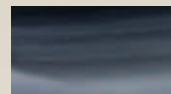
Oyster Opal



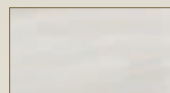
Sierra



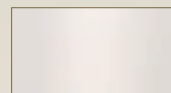
Oceanwave Opal



Midnight Opal



Sterling Silver



White Pearl

See your local dealers for details on skirt and shell availability on specific Down East Models.

Somerset SOMERSET



Three person spa is perfect for indoor use or where space is at a premium.

Dimensions:	66" x 84" x 32"
Dry weight:	515 lbs
Gallons:	215
Pumps:	1
Filtration:	40 sq. ft.
Number of jets:	28
Seating capacity:	3
Waterfall:	1
LED Lighting:	Colorscape Light

Cape Cod CAPE COD



A deluxe 7' no lounge spa. It is a mid-priced spa that performs better than most company's top-of-the-line model.

Dimensions:	84"x 84" x 38"
Dry weight:	715 lbs
Gallons:	425
Pumps:	2
Filtration:	40 sq. ft.
Number of jets:	45
Seating capacity:	6-7
Waterfalls:	1
LED Lighting:	Waterline

Exeter EXETER



This popular 7' spa features a lounge and a reverse molded neck and shoulder therapy seat.

Dimensions:	84" x 84" x 38"
Dry weight:	705 lbs
Gallons:	410
Pumps:	2
Filtration:	40 sq. ft.
Number of jets:	45
Seating capacity:	5-6
Waterfalls:	1
LED Lighting:	Waterline

Portsmouth PORTSMOUTH



Roomy 8' spa with lounge has plenty of space for six people.

Dimensions:	94" x 94" x 38"
Dry weight:	750 lbs
Gallons:	485
Pumps:	2
Filtration:	40 sq. ft.
Number of jets:	54
Seating capacity:	5-6
Waterfalls:	1
LED Lighting:	Waterline

Windsor WINDSOR STS



The popular 8' no lounge model featuring the Spa Theater System with pop-up TV.

Dimensions:	94" x 94" x 38"
Dry weight:	780 lbs
Gallons:	510
Pumps:	2
Filtration:	40 sq. ft.
Number of jets:	55
Seating capacity:	5-6
Waterfalls:	1
LED Lighting:	Waterline

Windsor WINDSOR



Roomy 8' no lounge model.

Dimensions:	94" x 94" x 38"
Dry weight:	760 lbs
Gallons:	510
Pumps:	2
Filtration:	40 sq. ft.
Number of jets:	56
Seating capacity:	6-7
Waterfalls:	1
LED Lighting:	Waterline

East Hampton EAST HAMPTON SE



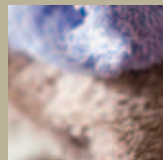
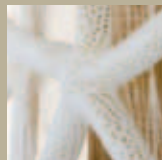
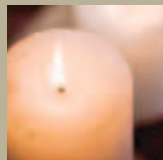
The East Hampton is the ultimate family spa with seating for up to 10 people.

Dimensions:	94" x 120" x 39"
Dry weight:	970 lbs
Gallons:	620
Pumps:	2
Filtration:	40 sq. ft.
Number of jets:	55
Seating capacity:	8-10
Waterfalls:	1
LED Lighting:	Waterline



Master Spas is based in Fort Wayne, Indiana, 90 miles north of Indianapolis. Operating out of a state-of-the-art 175,000 square foot manufacturing facility and distribution center covering 18 acres, and a 60,000 square foot warehouse complex on 9 acres, we are one of the largest spa manufacturers in the country. Our management team has over 90 years of spa manufacturing success, one of the strongest track records in the industry.

SOOTHING RELIEF *Down East Spas*



Cares for Cures

Master Spas is pleased and proud to assist two foundations dedicated to finding and funding the cures for life-hindering diseases.



Along with the Lupus Foundation of America, we have initiated a campaign to help raise awareness and find a cure for this debilitating disease that affects more than 1.5 million Americans. Part of the profit from each "Lights for Lupus" spa model will go to the Lupus Foundation. Together, we can fund and find the cure.



Master Spas has joined forces with the Vera Bradley Foundation for Breast Cancer to eradicate breast cancer, a life-threatening disease, by providing financial support for research and research-related projects.

For more information, visit lupus.org and verabradley.org.



www.DownEastSpas.com

www.MasterSpas.com

www.MichaelPhelpsSwimSpas.com



Master Spas reserves the right to change product specifications or features without notice.

Master Spas is a manufacturer of spas and related products, and we stand behind every product we produce pursuant to those representations which are stated in our written limited warranty. Your dealer is an independent businessperson or company and not an employee or agent of Master Spas, Inc. We cannot and do not accept any responsibility or liability for any other representations, statements or contracts made by any dealer beyond the provisions of our written limited warranty.

